

**GA LEGEND**

WALLS GENERALLY FOR DESCRIPTION OF WALLS TYPES REFER TO SPECIFICATION AND DRAWINGS AS00.  
 WALLS EXTEND TO UNDERSIDE OF SLAB OR ROOF FLOOR.  
 WALLS EXTEND TO UNDERSIDE OF SLAB OR ROOF SHEETING.  
 FRL - F0900  
 FRL 120120/120 LEVELS  
 FRL - FINISHED FLOOR LEVEL  
 SSL - STRUCTURAL SLAB LEVEL  
 DIMENSIONS  
 - STRUCTURAL ELEMENTS ARE LOCATED ON GRID LINO  
 - WALL SETOUTS ARE TO FACE OF STUDBLOCK  
 - ALIGN - INDICATES THAT THE STRUCTURAL FACES ARE SETOUT SUCH THAT THE FINISHED FACES ALIGN  
 - SLAB PENETRATIONS & COLUMN SETOUT - REFER TO CONCRETE PROFILE PLANS -100 SERIES

**NOTES**  
 1. REFER / READ IN CONJUNCTION WITH LANDSCAPE AND ENGINEERING CONSULTANTS DOCUMENTS, INCLUDING BUT NOT LIMITED TO THE FOLLOWING:  
 - SIZE AND SETOUT OF STRUCTURAL ELEMENTS  
 - EXTERNAL FINISHES AND FINISHED GROUND/SURFACE LEVELS  
 - INGROUND SERVICES, MANHOLES, PITS, SERVICE TRENCHES AND THE LIKE.  
 2. REFER TO DOOR AND WINDOW SCHEDULES FOR DETAILS

SF - WALL TYPE REFER AS00  
 DT - DOOR TYPE  
 B - BUILDING  
 W - WALL FINISH & COLOUR  
 C - DOOR COLOUR/FRAME COLOUR  
 F - FLOOR FINISH & COLOUR  
 SK - SKIRTING FINISH AND COLOUR  
 V06 - VERIFY ON SITE

**FRL**

- - - FIRE WALLS/FIRE SEPARATING WALLS  
 STAIRLIFT SHAFTS  
 SHOOT PRODUCTS  
 OTHER SHAFTS  
 - - - FIRE WALLS/FIRE SEPARATING WALLS  
 STAIRLIFT SHAFTS  
 OTHER SHAFTS  
 GANTRY ROOMS  
 BOUNDARY CORRIDORS  
 BETWEEN SOU  
 - - - SMOKE WALLS  
 NB - LB - LOAD BEARING  
 NLB - NON LOAD BEARING

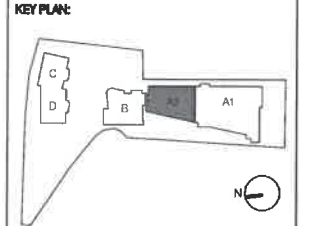
120120/120  
 LB 120120/120  
 NLB -120120  
 LB 130000/0  
 NLB -0000  
 000000  
 LB 000000  
 NLB -0000  
 LB 000000  
 NLB -0000

Do not scale from drawing  
 Details of all work to be done as shown on drawings and specifications.  
 Drawing is representative of the proposed or existing conditions without the consent of Phillip Space & Urban Pty Ltd.  
 The Client shall not be liable for any loss or damage arising from any use of any part of this drawing or specification.  
 The Client shall be responsible for obtaining all necessary permits and approvals for the proposed work.  
 The Client shall be responsible for obtaining all necessary permits and approvals for the proposed work.  
 The Client shall be responsible for obtaining all necessary permits and approvals for the proposed work.

No.	Amendment	Date
1	TOTEM POSITIONS UPDATED	DJ 25/07/17
1	IPC	DJ 25/07/17
G	GA UPDATES	DJ 28/07/18
F	FAC UPDATES	DJ 06/10/18
E	WALL FRLS INDICATED IN ACCORDANCE WITH THE FRL 120120/120	DJ 11/08/15
D	FLOOR BOX LOCATION UPDATED, SINK AND HWB ADDED	DJ 04/08/15
C	POD BATHROOMS UPDATED	DJ 12/09/15
B	UPDATED BATHROOM WALLS	DJ 29/05/15
A	IPC ISSUE	DJ 18/07/15
0	TENDER ISSUE	DJ 20/06/14
3	TENDER ISSUE	DJ 03/02/14
4	DRAFT TENDER	DJ 11/12/13
3	DRAFT TENDER	DJ 15/11/13
2	DRAFT TENDER	DJ 04/10/13
1	DRAFT TENDER	DJ 27/08/13
0	DRAFT TENDER	DJ 18/07/13

**CONSULTANTS:**

Accessis Consultant  
 Accessis Logic Consultancy Pty Limited +61 2 63386688  
 Accessibility Consultant  
 Morris Gooding Accessibility Consulting +61 2 95092022  
 BCA Consultant  
 City Plan Services +61 2 62703500  
 Civil/Structural Engineer  
 BGAC +61 6 97703000  
 Electrical, Hydraulic, ESD & Mechanical Engineer  
 Fire Engineer  
 O'Brien FireRisk +61 1300752960  
 Interior Designers  
 PTW Architects +61 2 92325877  
 Landscape Architect  
 Scott Cover +61 2 96573888  
 Project Managers  
 Momentum PM +61 4 10510874  
 Planning  
 SUB Planning +61 2 90024200  
 Traffic Consultant  
 Transport and Traffic Planning Associates +61 2 94600788



**Client:**  
 St. Basils Homes NSW Pty Ltd  
 130 Croydon St  
 Lakemba, NSW 2195

**PTW Architects** **PTW**

Level 11, M Phillip St  
 Sydney NSW Australia 2000  
 T +61 2 9232 5877  
 F +61 2 9232 4139

NSW Registered Architects  
 Dual Name Address No. 478  
 Smart Partners Address No. 6268

Approvals	By:	Date:
PTW Approved	DJ	28/05/13
Client Approval		

**Project:**  
 St. Basils  
 57-63 St Pauls Street, Randwick

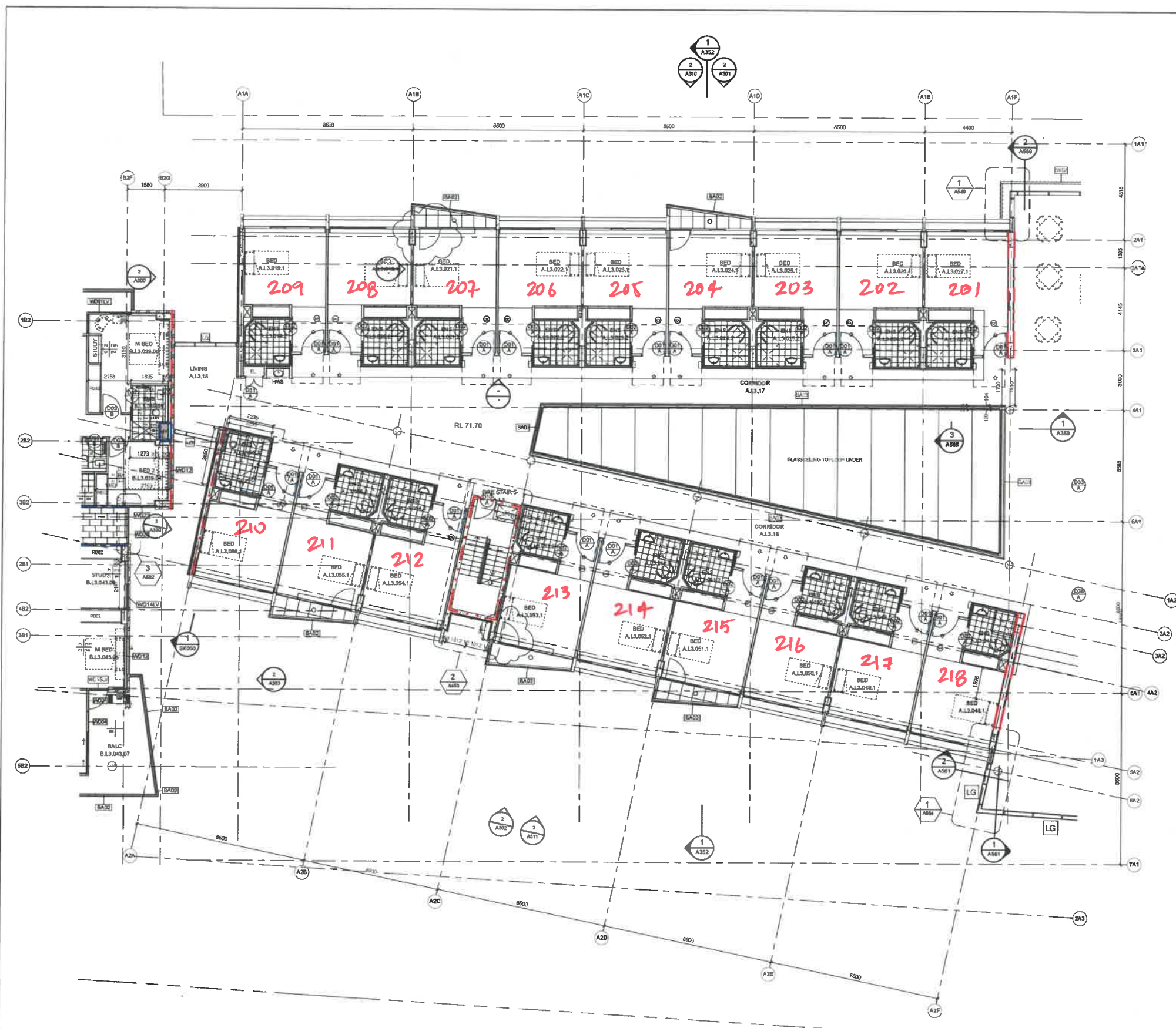
**Title:**  
 BUILDING A LEVEL 2 ZONE 2 FLOOR PLAN  
 LT

Sheet	1	2	3	4	5	6
Scale:	1:100	@A1	20/01/2017 12:13:51 PM	21/10/17		
Proj Date:						
Job No:						
Dwg No:	A207					
Revision:						
Status:	AS CONSTRUCTED					









**GA LEGEND**

WALLS GENERALLY FOR DESCRIPTION OF WALLS TYPES REFER TO SPECIFICATION AND DRAWINGS A500.

WALLS EXTEND TO UNDERSIDE OF SLAB OR ROOF

**FIRE WALLS**

WALLS EXTEND TO UNDERSIDE OF SLAB OR ROOF

**LEVELS**

FRL - FINISHED FLOOR LEVEL  
 SOL - STRUCTURAL SLAB LEVEL  
 DIMENSIONAL

STRUCTURAL ELEMENTS ARE LOCATED ON GRID UNO  
 WALL SETOUTS ARE TO FACE OF STUBBLOCK  
 ALIGN - INDICATES THAT THE STRUCTURAL PAGES ARE SETOUT SUCH THAT THE FINISHED FACES ALIGN  
 SLAB PENETRATIONS & COLUMN SETOUT - REFER TO CONCRETE PROFILE PLANS - 100 SERIES

**NOTES**

1. REFER / READ IN CONNECTION WITH LANDSCAPE AND ENGINEERING CONSULTANTS DOCUMENTS INCLUDING BUT NOT LIMITED TO THE FOLLOWING:  
 - SIZE AND SETOUT OF STRUCTURAL ELEMENTS  
 - EXTERNAL FINISHES AND FINISHED GROUND SURFACE LEVELS  
 - INGROUND SERVICES, MANHOLES, PITS, SERVICE TRENCHES AND THE LIKE.  
 2. REFER TO DOOR AND WINDOW SCHEDULES FOR DETAILS

WALL TYPE REFER A500  
 DOOR TYPE  
 BUILDING  
 WALL FINISH & COLOUR  
 DOOR COLOUR/FRAME COLOUR  
 FLOOR FINISH & COLOUR  
 SIGHTING FINISH AND COLOUR  
 VOB - VERIFY ON SITE

**FRL**

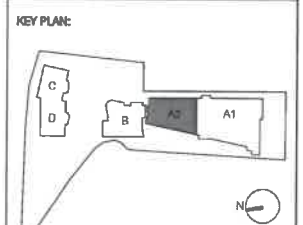
--- FIRE WALL/FIRE SEPARATING WALLS 120/120/120  
 STAIRLIFT SHAFTS & SHAFTS-HOT PRODUCTS LB 120/120/120  
 OTHER SHAFTS NLB -120/120  
 NLB -90/90  
 NLB -90/90

--- FIRE WALL/FIRE SEPARATING WALLS 60/90/60  
 FIRE WALLS LB 90/90/90  
 STAIRLIFT SHAFTS LB 90/90/90  
 OTHER SHAFTS NLB -90/90  
 GARAGE ROOMS LB 90/90/90  
 BOUNDARY CORRIDORS LB 90/90/90  
 BETWEEN SOU NLB -90/90

--- SMOKE WALLS

NB - LB - LOAD BEARING  
 NLB - NON LOAD BEARING

Rev	Chg	Description	Date
1		Issue for construction	22/04/16
2		Issue for construction	22/04/16
3		Issue for construction	22/04/16
4		Issue for construction	22/04/16
5		Issue for construction	22/04/16
6		Issue for construction	22/04/16
7		Issue for construction	22/04/16
8		Issue for construction	22/04/16
9		Issue for construction	22/04/16
10		Issue for construction	22/04/16
11		Issue for construction	22/04/16
12		Issue for construction	22/04/16
13		Issue for construction	22/04/16
14		Issue for construction	22/04/16
15		Issue for construction	22/04/16
16		Issue for construction	22/04/16
17		Issue for construction	22/04/16
18		Issue for construction	22/04/16
19		Issue for construction	22/04/16
20		Issue for construction	22/04/16
21		Issue for construction	22/04/16
22		Issue for construction	22/04/16
23		Issue for construction	22/04/16
24		Issue for construction	22/04/16
25		Issue for construction	22/04/16
26		Issue for construction	22/04/16
27		Issue for construction	22/04/16
28		Issue for construction	22/04/16
29		Issue for construction	22/04/16
30		Issue for construction	22/04/16
31		Issue for construction	22/04/16
32		Issue for construction	22/04/16
33		Issue for construction	22/04/16
34		Issue for construction	22/04/16
35		Issue for construction	22/04/16
36		Issue for construction	22/04/16
37		Issue for construction	22/04/16
38		Issue for construction	22/04/16
39		Issue for construction	22/04/16
40		Issue for construction	22/04/16
41		Issue for construction	22/04/16
42		Issue for construction	22/04/16
43		Issue for construction	22/04/16
44		Issue for construction	22/04/16
45		Issue for construction	22/04/16
46		Issue for construction	22/04/16
47		Issue for construction	22/04/16
48		Issue for construction	22/04/16
49		Issue for construction	22/04/16
50		Issue for construction	22/04/16
51		Issue for construction	22/04/16
52		Issue for construction	22/04/16
53		Issue for construction	22/04/16
54		Issue for construction	22/04/16
55		Issue for construction	22/04/16
56		Issue for construction	22/04/16
57		Issue for construction	22/04/16
58		Issue for construction	22/04/16
59		Issue for construction	22/04/16
60		Issue for construction	22/04/16
61		Issue for construction	22/04/16
62		Issue for construction	22/04/16
63		Issue for construction	22/04/16
64		Issue for construction	22/04/16
65		Issue for construction	22/04/16
66		Issue for construction	22/04/16
67		Issue for construction	22/04/16
68		Issue for construction	22/04/16
69		Issue for construction	22/04/16
70		Issue for construction	22/04/16
71		Issue for construction	22/04/16
72		Issue for construction	22/04/16
73		Issue for construction	22/04/16
74		Issue for construction	22/04/16
75		Issue for construction	22/04/16
76		Issue for construction	22/04/16
77		Issue for construction	22/04/16
78		Issue for construction	22/04/16
79		Issue for construction	22/04/16
80		Issue for construction	22/04/16
81		Issue for construction	22/04/16
82		Issue for construction	22/04/16
83		Issue for construction	22/04/16
84		Issue for construction	22/04/16
85		Issue for construction	22/04/16
86		Issue for construction	22/04/16
87		Issue for construction	22/04/16
88		Issue for construction	22/04/16
89		Issue for construction	22/04/16
90		Issue for construction	22/04/16
91		Issue for construction	22/04/16
92		Issue for construction	22/04/16
93		Issue for construction	22/04/16
94		Issue for construction	22/04/16
95		Issue for construction	22/04/16
96		Issue for construction	22/04/16
97		Issue for construction	22/04/16
98		Issue for construction	22/04/16
99		Issue for construction	22/04/16
100		Issue for construction	22/04/16



- Consultants:**
- Account Consultant: Account Logic Consultancy Pty Limited +61 2 83388888
  - Accessibility Consultant: Merits Gooding Accessibility Consulting +61 2 96292922
  - SCA Consultant: City Plan Services +61 2 82702500
  - Civil / Structural Engineer: BQAE +61 8 97793900
  - Electrical, Hydraulic, ESD & Mechanical Engineer: Fire Engineer: Clever Firelink +61 1300736290
  - Interior Designer: PTW Architecture +61 2 92252577
  - Landscape Architect: Scott Carter +61 2 99573686
  - Project Managers: Momentum PM +61 4 10516974
  - Planning: 3&B Planning +61 2 90294200
  - Traffic Consultant: Transport and Traffic Planning Associates +61 2 94500788

**Clients:**

St. Basils Homes NSW Pty Ltd  
 130 Croydon St  
 Lakemba, NSW 2195

**PTW Architects**

Land 13, 9 Cadellough St  
 Sydney NSW Australia 2000

**PTW**

T +61 2 9222 5877  
 F +61 2 9221 4139

Approve	By	Date
PTW Approval	DJ	28/05/13
Client Approval		

**Project:**

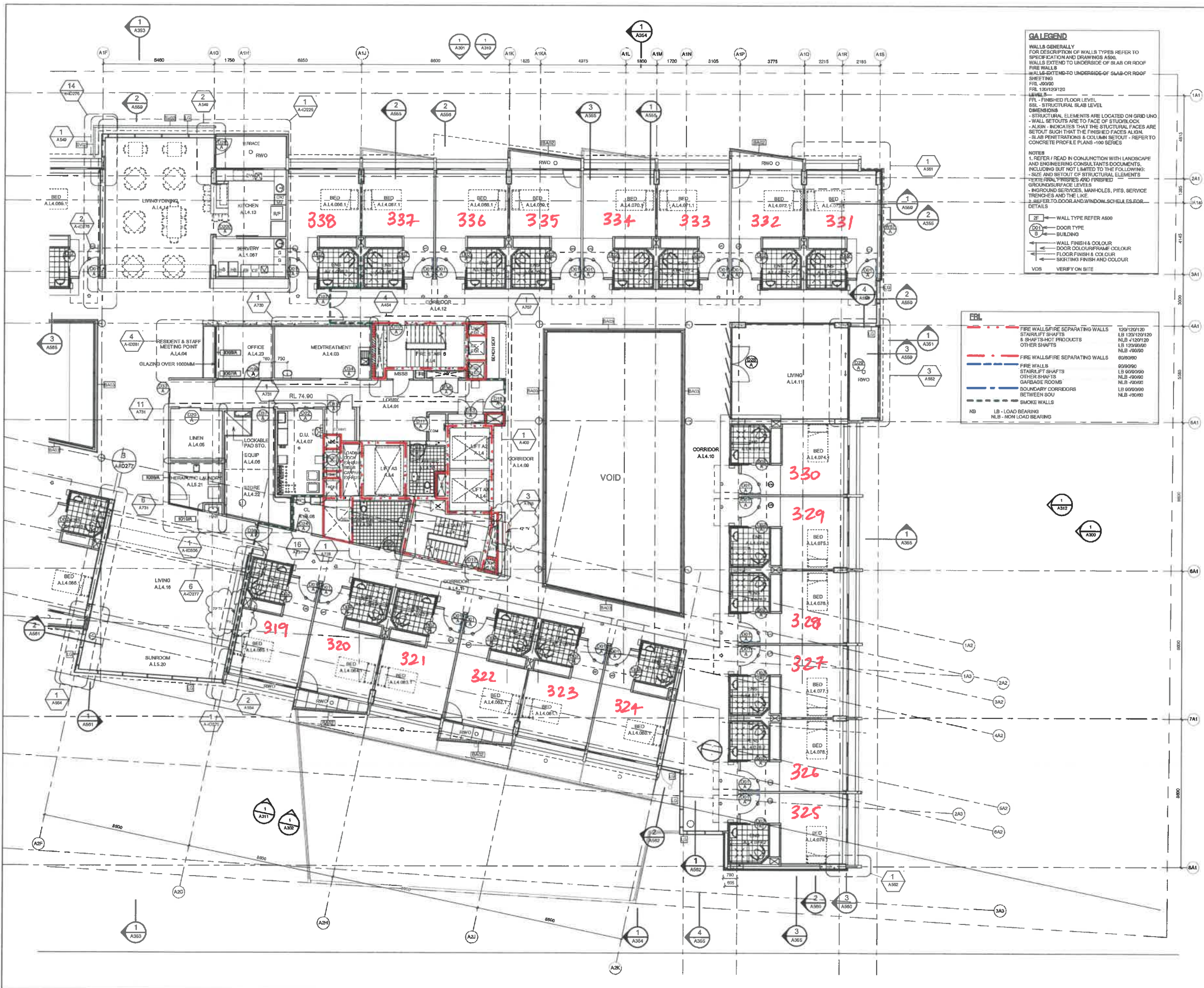
St. Basils  
 57-83 St Pauls Street, Randwick

**Title:**

BUILDING A LEVEL 3 ZONE 2 FLOOR PLAN

0	1	2	3	4	5	6	7	8	9
Scale:	1: 100	@A1	Plot Date:	25/04/2016 6:01:24 PM	Job No:	211067			
Drawn No:	A209	Revision:		H					
Shown:	AS CONSTRUCTED								





**GALEGGEND**

WALLS GENERALLY FOR DESCRIPTION OF WALL TYPES REFER TO SPECIFICATION AND DRAWINGS ABOVE.

WALLS EXTENDING TO UNDERSIDE OF SLAB OR ROOF SHEETING REFER TO UNDER-SIDE OF SLAB OR ROOF SHEETING.

FRL - FINISHED FLOOR LEVEL

SSL - STRUCTURAL SLAB LEVEL

DIMENSIONS - STRUCTURAL ELEMENTS ARE LOCATED ON GRID LINES - WALL SETOUTS ARE TO FACE OF STUDYBLOCK

ALIGN - INDICATES THAT THE STRUCTURAL FACES ARE SETOUT SUCH THAT THE FINISHED FACES ALIGN.

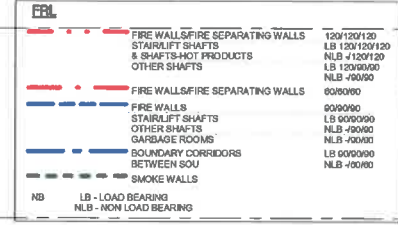
SLAB PENETRATIONS & COLUMN SETOUT - REFER TO CONCRETE PROFILE PLANS -100 SERIES

**NOTES**

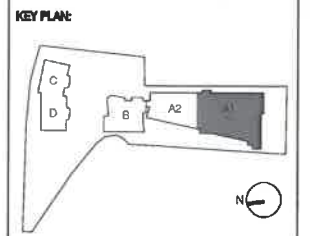
1. REFER / READ IN CONJUNCTION WITH LANDSCAPE AND ENGINEERING CONSULTANTS DOCUMENTS, INCLUDING BUT NOT LIMITED TO THE FOLLOWING:

- SIZE AND SETOUT OF STRUCTURAL ELEMENTS
- TEXTURE, FINISHES AND FINISHED GROUNDSURFACE LEVELS
- GROUND SERVICES, MANHOLES, PITS, SERVICE TRENCHES AND THE LIKE
- REFER TO DOORS AND WINDOW SCHEDULES FOR DETAILS

2F - WALL TYPE REFER A600  
 DOOR - DOOR TYPE BUILDING  
 WALL FINISH & COLOUR  
 DOOR COLOUR/FRAME COLOUR  
 FLOOR FINISH & COLOUR  
 SKIRTING FINISH AND COLOUR  
 VOS - VERIFY ON SITE



No	Amendments	Chg	Date
V	REV UPDATES	DJ	08/02/17
U	TY REWORKED	DJ	01/07/18
Y	IMBIB ADDRESS	DJ	01/07/18
S	IPC	DJ	28/09/18
B	IPC	DJ	11/05/18
Q	IPC	DJ	28/04/18
P	IPC	DJ	28/04/18
O	LAUNDRY DOOR UPDATE	DJ	22/02/18
N	ISA UPDATES	DJ	22/02/18
M	ISA UPDATES	DJ	28/07/18
L	BACK KITCHEN UPDATES	DJ	14/12/18
K	SECTION REF TO SHEET A410 DELETED	DJ	28/11/18
J	RAC UPDATES	DJ	28/08/18
I	RAC UPDATES	DJ	28/04/18
H	THERAPEUTIC LAUNDRY UPDATES	DJ	21/08/18
G	WALL FINISHES INDICATED IN ACCORDANCE WITH THE FURNISHING	DJ	11/08/18
F	DOOR UPDATES	DJ	08/08/18
E	BUILDING A CODE UPDATES	DJ	28/08/18
D	POST TENSIONING UPDATES	DJ	13/08/18
C	UPDATED BATHROOM WALLS	DJ	28/08/18
B	RAC BATHROOMS ON SOUTH END FLIPPED, HANDRAILS DELETED	DJ	20/08/18
A	IPC ISSUE	DJ	19/08/18
7	TENDER ISSUE	DJ	30/08/17
6	TENDER ISSUE	DJ	08/08/17
5	DRAFT TENDER	DJ	18/12/17
4	DRAFT TENDER	DJ	11/12/17
3	DRAFT TENDER	DJ	18/11/17
2	DRAFT TENDER	DJ	04/10/17
1	DRAFT TENDER	DJ	27/08/17
0	DRAFT TENDER	DJ	11/08/17



**Consultants:**

Acoustic Consultant	Acoustic Logic Consultancy Pty Limited	+61 2 83388888
Accessibility Consultant	Morris Godding Accessibility Consulting	+61 2 96929322
BCA Consultant	City Plan Services	+61 2 82700500
Civil / Structural Engineer	BGRM	+61 6 97700300
Electrical, Hydraulic, ESD & Mechanical Engineer		
Fire Engineer	Oleason FireRisk	+61 1300732890
Interior Designers	PTW Architects	+61 2 92325877
Landscape Architect	Scott Carter	+61 2 36573968
Project Managers	Momentum PM	+61 4 10518074
Planning	SUB Planning	+61 2 90024200
Traffic Consultant	Transport and Traffic Planning Associates	+61 2 94400788

**Client:**

St. Basil's Homes NSW Pty Ltd  
 130 Croydon St  
 Lakemba, NSW 2195

**PTW Architects** **PTW**

Level 11, 88 Philip St  
 Sydney NSW Australia 2000

T +61 2 9232 3877  
 F +61 2 9232 4139

Approvals	By	Date
PTW Approval	DJ	28/05/13
Client Approval		

**Project:**

St. Basil's  
 57-63 St Pauls Street, Randwick

**Title:**

BUILDING A LEVEL 4 ZONE 1 FLOOR PLAN  
**L3**

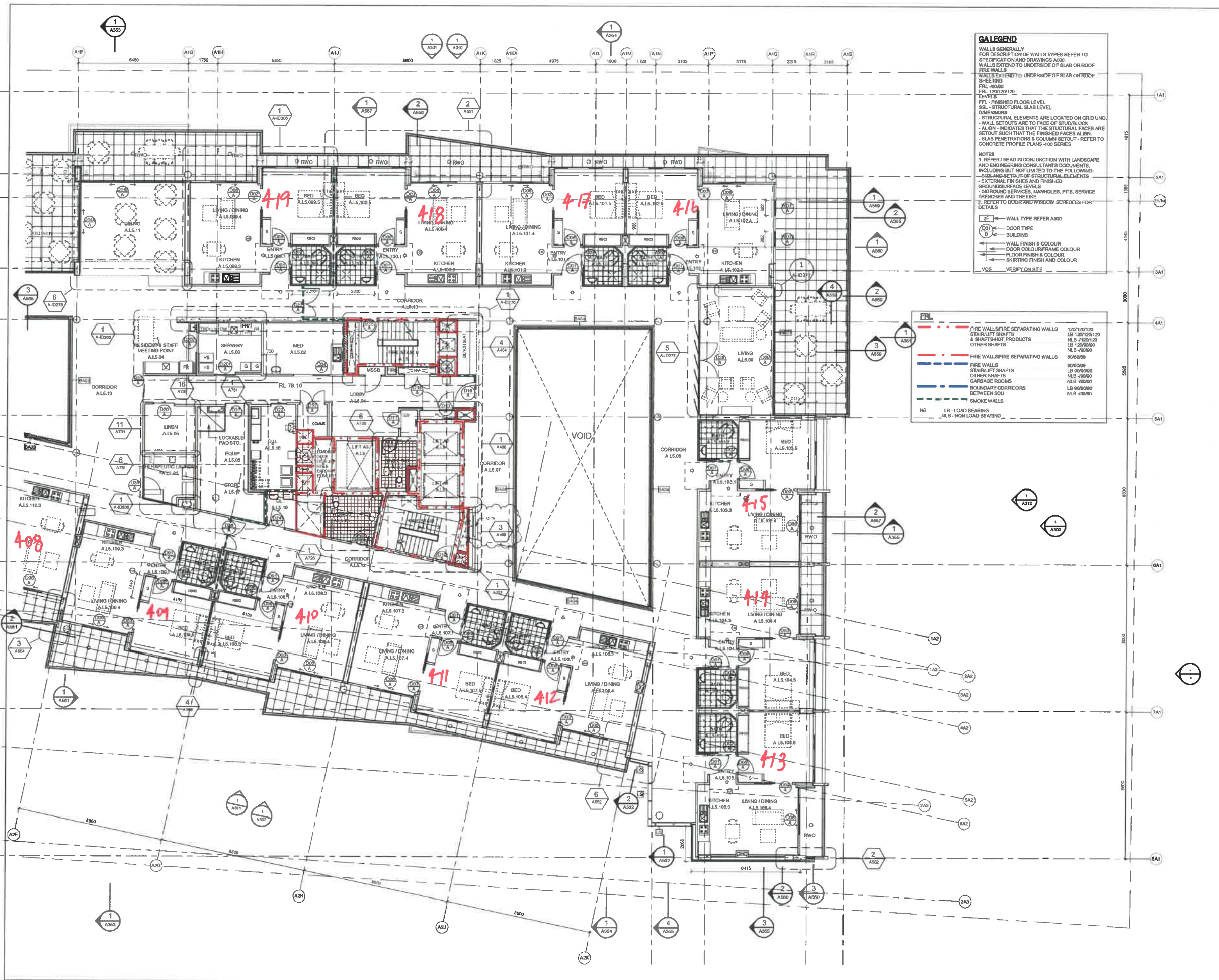
Scale:	Plot Date:	Job No:
1 : 100 @A1	8/02/2017 8:04 PM	211057
Dep No:		Revision:
A210		V
Status:	AS CONSTRUCTED	

C:\New\_Locals\11007\_30888\_Central\_Jobsheet.rvt









**GALEND**

WALLS GENERALLY FOR DESCRIPTION OF WALLS TYPES REFER TO SPECIFICATION AND DRAWINGS A500.

WALLS EXTEND TO UNDERSIDE OF SLAB OR ROOF.

FIRE WALLS WALLS EXTEND TO UNDERSIDE OF SLAB OR ROOF SHEETING.

FRL - FINISHED FLOOR LEVEL.

SSL - STRUCTURAL SLAB LEVEL.

DIMENSIONS - STRUCTURAL ELEMENTS ARE LOCATED ON GRID UNO. - WALL SETOUTS ARE TO FACE OF STRUCTURE. - ALIGN - INDICATES THAT THE STRUCTURAL FACES ARE SETOUT SUCH THAT THE FINISHED FACES ALIGN. - SLAB PENETRATIONS & COLUMN SETOUT - REFER TO CONCRETE PROFILE PLANS -100 SERIES.

NOTES

1. REFER / READ IN CONJUNCTION WITH LANDSCAPE AND ENGINEERING CONSULTANTS DOCUMENTS, INCLUDING BUT NOT LIMITED TO THE FOLLOWING:

- SITE AND SETOUT OF STRUCTURAL ELEMENTS
- EXTERNAL FINISHES AND FINISHED GROUND SURFACE LEVELS
- INGROUND SERVICES, MANHOLES, PITS, SERVICE TRENCHES AND THE LIKE
- REFER TO DOOR AND WINDOW SCHEDULES FOR DETAILS.

2. REFER TO DOOR AND WINDOW SCHEDULES FOR DETAILS.

3. REFER TO DOOR AND WINDOW SCHEDULES FOR DETAILS.

4. REFER TO DOOR AND WINDOW SCHEDULES FOR DETAILS.

5. REFER TO DOOR AND WINDOW SCHEDULES FOR DETAILS.

6. REFER TO DOOR AND WINDOW SCHEDULES FOR DETAILS.

7. REFER TO DOOR AND WINDOW SCHEDULES FOR DETAILS.

8. REFER TO DOOR AND WINDOW SCHEDULES FOR DETAILS.

9. REFER TO DOOR AND WINDOW SCHEDULES FOR DETAILS.

10. REFER TO DOOR AND WINDOW SCHEDULES FOR DETAILS.

11. REFER TO DOOR AND WINDOW SCHEDULES FOR DETAILS.

12. REFER TO DOOR AND WINDOW SCHEDULES FOR DETAILS.

13. REFER TO DOOR AND WINDOW SCHEDULES FOR DETAILS.

14. REFER TO DOOR AND WINDOW SCHEDULES FOR DETAILS.

15. REFER TO DOOR AND WINDOW SCHEDULES FOR DETAILS.

16. REFER TO DOOR AND WINDOW SCHEDULES FOR DETAILS.

17. REFER TO DOOR AND WINDOW SCHEDULES FOR DETAILS.

18. REFER TO DOOR AND WINDOW SCHEDULES FOR DETAILS.

19. REFER TO DOOR AND WINDOW SCHEDULES FOR DETAILS.

20. REFER TO DOOR AND WINDOW SCHEDULES FOR DETAILS.

21. REFER TO DOOR AND WINDOW SCHEDULES FOR DETAILS.

22. REFER TO DOOR AND WINDOW SCHEDULES FOR DETAILS.

23. REFER TO DOOR AND WINDOW SCHEDULES FOR DETAILS.

24. REFER TO DOOR AND WINDOW SCHEDULES FOR DETAILS.

25. REFER TO DOOR AND WINDOW SCHEDULES FOR DETAILS.

26. REFER TO DOOR AND WINDOW SCHEDULES FOR DETAILS.

27. REFER TO DOOR AND WINDOW SCHEDULES FOR DETAILS.

28. REFER TO DOOR AND WINDOW SCHEDULES FOR DETAILS.

29. REFER TO DOOR AND WINDOW SCHEDULES FOR DETAILS.

30. REFER TO DOOR AND WINDOW SCHEDULES FOR DETAILS.

31. REFER TO DOOR AND WINDOW SCHEDULES FOR DETAILS.

32. REFER TO DOOR AND WINDOW SCHEDULES FOR DETAILS.

33. REFER TO DOOR AND WINDOW SCHEDULES FOR DETAILS.

34. REFER TO DOOR AND WINDOW SCHEDULES FOR DETAILS.

35. REFER TO DOOR AND WINDOW SCHEDULES FOR DETAILS.

36. REFER TO DOOR AND WINDOW SCHEDULES FOR DETAILS.

37. REFER TO DOOR AND WINDOW SCHEDULES FOR DETAILS.

38. REFER TO DOOR AND WINDOW SCHEDULES FOR DETAILS.

39. REFER TO DOOR AND WINDOW SCHEDULES FOR DETAILS.

40. REFER TO DOOR AND WINDOW SCHEDULES FOR DETAILS.

41. REFER TO DOOR AND WINDOW SCHEDULES FOR DETAILS.

42. REFER TO DOOR AND WINDOW SCHEDULES FOR DETAILS.

43. REFER TO DOOR AND WINDOW SCHEDULES FOR DETAILS.

44. REFER TO DOOR AND WINDOW SCHEDULES FOR DETAILS.

45. REFER TO DOOR AND WINDOW SCHEDULES FOR DETAILS.

46. REFER TO DOOR AND WINDOW SCHEDULES FOR DETAILS.

47. REFER TO DOOR AND WINDOW SCHEDULES FOR DETAILS.

48. REFER TO DOOR AND WINDOW SCHEDULES FOR DETAILS.

49. REFER TO DOOR AND WINDOW SCHEDULES FOR DETAILS.

50. REFER TO DOOR AND WINDOW SCHEDULES FOR DETAILS.

51. REFER TO DOOR AND WINDOW SCHEDULES FOR DETAILS.

52. REFER TO DOOR AND WINDOW SCHEDULES FOR DETAILS.

53. REFER TO DOOR AND WINDOW SCHEDULES FOR DETAILS.

54. REFER TO DOOR AND WINDOW SCHEDULES FOR DETAILS.

55. REFER TO DOOR AND WINDOW SCHEDULES FOR DETAILS.

56. REFER TO DOOR AND WINDOW SCHEDULES FOR DETAILS.

57. REFER TO DOOR AND WINDOW SCHEDULES FOR DETAILS.

58. REFER TO DOOR AND WINDOW SCHEDULES FOR DETAILS.

59. REFER TO DOOR AND WINDOW SCHEDULES FOR DETAILS.

60. REFER TO DOOR AND WINDOW SCHEDULES FOR DETAILS.

61. REFER TO DOOR AND WINDOW SCHEDULES FOR DETAILS.

62. REFER TO DOOR AND WINDOW SCHEDULES FOR DETAILS.

63. REFER TO DOOR AND WINDOW SCHEDULES FOR DETAILS.

64. REFER TO DOOR AND WINDOW SCHEDULES FOR DETAILS.

65. REFER TO DOOR AND WINDOW SCHEDULES FOR DETAILS.

66. REFER TO DOOR AND WINDOW SCHEDULES FOR DETAILS.

67. REFER TO DOOR AND WINDOW SCHEDULES FOR DETAILS.

68. REFER TO DOOR AND WINDOW SCHEDULES FOR DETAILS.

69. REFER TO DOOR AND WINDOW SCHEDULES FOR DETAILS.

70. REFER TO DOOR AND WINDOW SCHEDULES FOR DETAILS.

71. REFER TO DOOR AND WINDOW SCHEDULES FOR DETAILS.

72. REFER TO DOOR AND WINDOW SCHEDULES FOR DETAILS.

73. REFER TO DOOR AND WINDOW SCHEDULES FOR DETAILS.

74. REFER TO DOOR AND WINDOW SCHEDULES FOR DETAILS.

75. REFER TO DOOR AND WINDOW SCHEDULES FOR DETAILS.

76. REFER TO DOOR AND WINDOW SCHEDULES FOR DETAILS.

77. REFER TO DOOR AND WINDOW SCHEDULES FOR DETAILS.

78. REFER TO DOOR AND WINDOW SCHEDULES FOR DETAILS.

79. REFER TO DOOR AND WINDOW SCHEDULES FOR DETAILS.

80. REFER TO DOOR AND WINDOW SCHEDULES FOR DETAILS.

81. REFER TO DOOR AND WINDOW SCHEDULES FOR DETAILS.

82. REFER TO DOOR AND WINDOW SCHEDULES FOR DETAILS.

83. REFER TO DOOR AND WINDOW SCHEDULES FOR DETAILS.

84. REFER TO DOOR AND WINDOW SCHEDULES FOR DETAILS.

85. REFER TO DOOR AND WINDOW SCHEDULES FOR DETAILS.

86. REFER TO DOOR AND WINDOW SCHEDULES FOR DETAILS.

87. REFER TO DOOR AND WINDOW SCHEDULES FOR DETAILS.

88. REFER TO DOOR AND WINDOW SCHEDULES FOR DETAILS.

89. REFER TO DOOR AND WINDOW SCHEDULES FOR DETAILS.

90. REFER TO DOOR AND WINDOW SCHEDULES FOR DETAILS.

91. REFER TO DOOR AND WINDOW SCHEDULES FOR DETAILS.

92. REFER TO DOOR AND WINDOW SCHEDULES FOR DETAILS.

93. REFER TO DOOR AND WINDOW SCHEDULES FOR DETAILS.

94. REFER TO DOOR AND WINDOW SCHEDULES FOR DETAILS.

95. REFER TO DOOR AND WINDOW SCHEDULES FOR DETAILS.

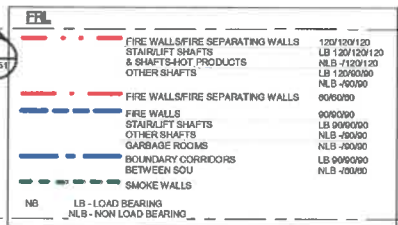
96. REFER TO DOOR AND WINDOW SCHEDULES FOR DETAILS.

97. REFER TO DOOR AND WINDOW SCHEDULES FOR DETAILS.

98. REFER TO DOOR AND WINDOW SCHEDULES FOR DETAILS.

99. REFER TO DOOR AND WINDOW SCHEDULES FOR DETAILS.

100. REFER TO DOOR AND WINDOW SCHEDULES FOR DETAILS.



On site scale 1:100  
Depth of dimensions on site before construction work.  
Copying or reproduction of any drawing is strictly prohibited without the consent of PTW Architects.  
The Architect shall not be liable in any way for claims or damages arising from the use of any drawing or information provided by the client or any other person. The client shall be responsible for checking the accuracy of all data received from any other person and for checking the accuracy of all data received from any other person.  
The CAD files and other documents are only representations of the Project information and cannot be used to reproduce the construction documents or any other CAD files of the drawing or any other CAD files.

No	Amendment	Date
1	REV UPDATES	01/05/17
2	REV UPDATES	01/11/18
3	REV UPDATES	01/05/19
4	REV UPDATES	01/05/19
5	REV UPDATES	01/05/19
6	REV UPDATES	01/05/19
7	REV UPDATES	01/05/19
8	REV UPDATES	01/05/19
9	REV UPDATES	01/05/19
10	REV UPDATES	01/05/19
11	REV UPDATES	01/05/19
12	REV UPDATES	01/05/19
13	REV UPDATES	01/05/19
14	REV UPDATES	01/05/19
15	REV UPDATES	01/05/19
16	REV UPDATES	01/05/19
17	REV UPDATES	01/05/19
18	REV UPDATES	01/05/19
19	REV UPDATES	01/05/19
20	REV UPDATES	01/05/19
21	REV UPDATES	01/05/19
22	REV UPDATES	01/05/19
23	REV UPDATES	01/05/19
24	REV UPDATES	01/05/19
25	REV UPDATES	01/05/19
26	REV UPDATES	01/05/19
27	REV UPDATES	01/05/19
28	REV UPDATES	01/05/19
29	REV UPDATES	01/05/19
30	REV UPDATES	01/05/19
31	REV UPDATES	01/05/19
32	REV UPDATES	01/05/19
33	REV UPDATES	01/05/19
34	REV UPDATES	01/05/19
35	REV UPDATES	01/05/19
36	REV UPDATES	01/05/19
37	REV UPDATES	01/05/19
38	REV UPDATES	01/05/19
39	REV UPDATES	01/05/19
40	REV UPDATES	01/05/19
41	REV UPDATES	01/05/19
42	REV UPDATES	01/05/19
43	REV UPDATES	01/05/19
44	REV UPDATES	01/05/19
45	REV UPDATES	01/05/19
46	REV UPDATES	01/05/19
47	REV UPDATES	01/05/19
48	REV UPDATES	01/05/19
49	REV UPDATES	01/05/19
50	REV UPDATES	01/05/19
51	REV UPDATES	01/05/19
52	REV UPDATES	01/05/19
53	REV UPDATES	01/05/19
54	REV UPDATES	01/05/19
55	REV UPDATES	01/05/19
56	REV UPDATES	01/05/19
57	REV UPDATES	01/05/19
58	REV UPDATES	01/05/19
59	REV UPDATES	01/05/19
60	REV UPDATES	01/05/19
61	REV UPDATES	01/05/19
62	REV UPDATES	01/05/19
63	REV UPDATES	01/05/19
64	REV UPDATES	01/05/19
65	REV UPDATES	01/05/19
66	REV UPDATES	01/05/19
67	REV UPDATES	01/05/19
68	REV UPDATES	01/05/19
69	REV UPDATES	01/05/19
70	REV UPDATES	01/05/19
71	REV UPDATES	01/05/19
72	REV UPDATES	01/05/19
73	REV UPDATES	01/05/19
74	REV UPDATES	01/05/19
75	REV UPDATES	01/05/19
76	REV UPDATES	01/05/19
77	REV UPDATES	01/05/19
78	REV UPDATES	01/05/19
79	REV UPDATES	01/05/19
80	REV UPDATES	01/05/19
81	REV UPDATES	01/05/19
82	REV UPDATES	01/05/19
83	REV UPDATES	01/05/19
84	REV UPDATES	01/05/19
85	REV UPDATES	01/05/19
86	REV UPDATES	01/05/19
87	REV UPDATES	01/05/19
88	REV UPDATES	01/05/19
89	REV UPDATES	01/05/19
90	REV UPDATES	01/05/19
91	REV UPDATES	01/05/19
92	REV UPDATES	01/05/19
93	REV UPDATES	01/05/19
94	REV UPDATES	01/05/19
95	REV UPDATES	01/05/19
96	REV UPDATES	01/05/19
97	REV UPDATES	01/05/19
98	REV UPDATES	01/05/19
99	REV UPDATES	01/05/19
100	REV UPDATES	01/05/19

Consultants:

- Acoustic Consultant: Acoustic Logic Consultancy Pty Limited +61 2 83396888
- Accessibility Consultant: Motie Gendry Accessibility Consulting +61 2 98293322
- BCA Consultant: City Plan Services +61 2 92705600
- Civil / Structural Engineer: BG&E +61 8 97703300
- Electrical, Hydraulic, ERD & Mechanical Engineer: [Name] +61 1300732820
- Interior Designers: PTW Architects +61 2 92525777
- Landscape Architect: Scott Carter +61 2 96573968
- Project Managers: Momentum PM +61 4 10218974
- Planning: SUB Planning +61 2 90282200
- Traffic Consultant: Transport and Traffic Planning Associates +61 2 94500786

Client:

**St. Basil's Homes NSW Pty Ltd**  
130 Croydon St  
Lakemba, NSW 2195

**PTW Architects** **PTW**  
Level 11, 88 Phillip St  
Sydney NSW Australia 2000  
T +61 2 9222 5677  
F +61 2 9221 4139

NSW Registered Architects  
Dane Jones Architects No 478  
Smith Partners Architects No 8268

Approvals By:	Date:
PTW Approval: DJ	28/05/13
Client Approval:	

Project:

**St. Basil's**  
57-63 St Pauls Street, Randwick

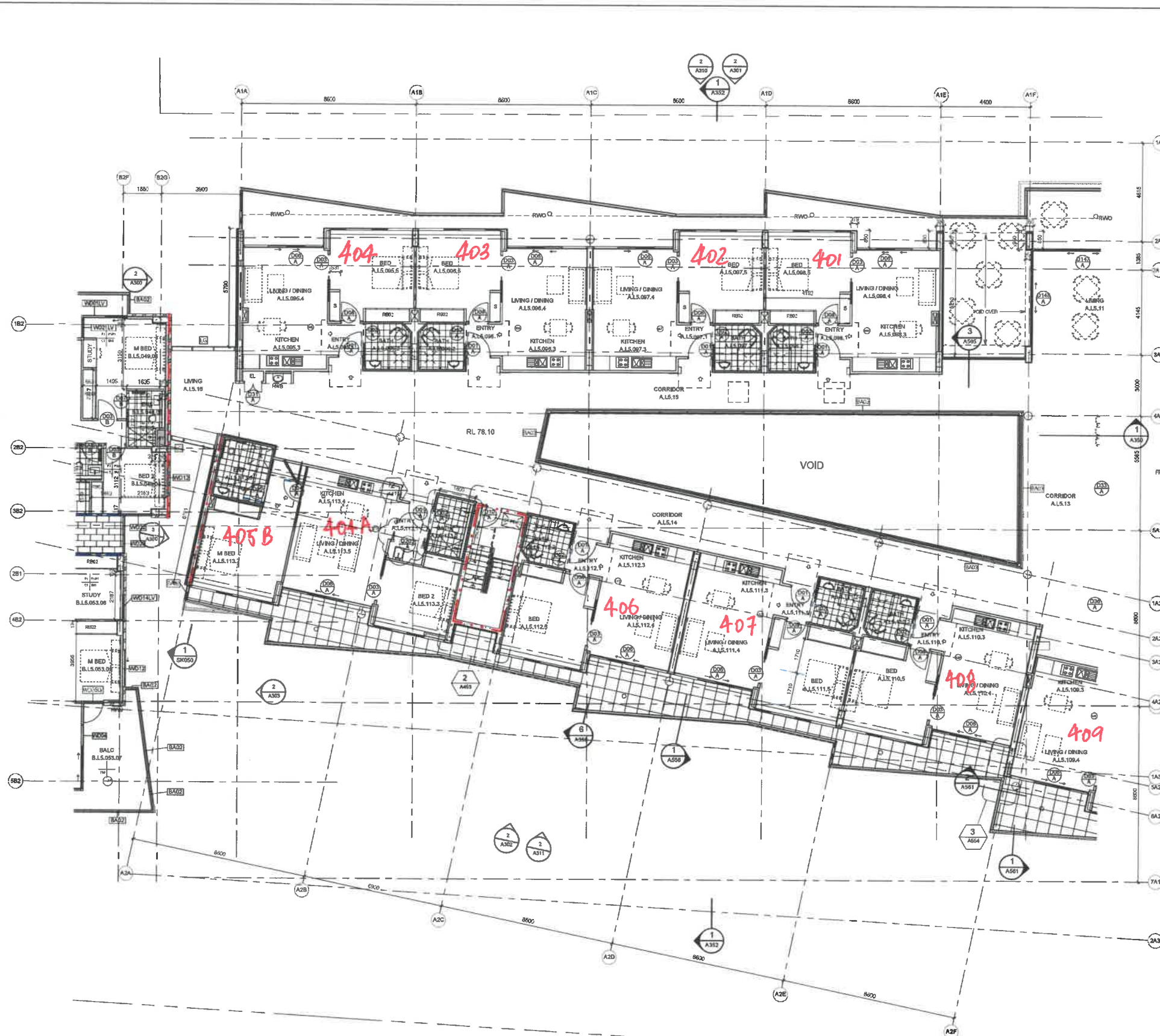
Title:

**BUILDING A LEVEL 5 ZONE 1 FLOOR PLAN**  
**L4**

Scale:	Plot Date:	Job No:
1:100 @A1	02/2017 6:10:17 PM	211067
Drawn No:	Revision:	
A212	T	
Status:	AS CONSTRUCTED	

C:\Work\Level5\1067\_Building\_A\_Level\_5\_Zone\_1\_Floor\_Plan.dwg





**GALEND**

WALLS GENERALLY FOR DESCRIPTION OF WALL TYPES REFER TO SPECIFICATION AND DRAWINGS A500.

WALLS EXTEND TO UNDERSIDE OF SLAB OR ROOF SHEETING.

FIRE WALLS - FINISHED FLOOR LEVEL.

SEAL - STRUCTURAL SLAB LEVEL.

DRYBATHS - STRUCTURAL ELEMENTS ARE LOCATED ON GRID UNO.

WALL SETOUTS ARE TO FACE OF STUDYBLOCK.

ALIGN - INDICATES THAT THE STRUCTURAL FACES ARE SETOUT SUCH THAT THE FINISHED FACES ALIGN.

SLAB PENETRATIONS & COLUMN SETOUT - REFER TO CONCRETE PROFILE PLANS - 1000 SERIES.

**NOTES**

1. REFER / READ IN CONJUNCTION WITH LANDSCAPE AND ENGINEERING CONSULTANTS DOCUMENTS, INCLUDING BUT NOT LIMITED TO THE FOLLOWING:

- SIZE AND SETOUT OF STRUCTURAL ELEMENTS
- EXTERNAL FINISHES AND FINISHED GROUND/SURFACE LEVELS
- INGROUND SERVICES, MANHOLES, PITS, SERVICE TRENCHES AND THE LIKE
- REFER TO DOOR AND WINDOW SCHEDULES FOR DETAILS

2. REFER TO DOOR AND WINDOW SCHEDULES FOR DETAILS.

3. REFER TO DOOR AND WINDOW SCHEDULES FOR DETAILS.

4. REFER TO DOOR AND WINDOW SCHEDULES FOR DETAILS.

5. REFER TO DOOR AND WINDOW SCHEDULES FOR DETAILS.

6. REFER TO DOOR AND WINDOW SCHEDULES FOR DETAILS.

7. REFER TO DOOR AND WINDOW SCHEDULES FOR DETAILS.

8. REFER TO DOOR AND WINDOW SCHEDULES FOR DETAILS.

9. REFER TO DOOR AND WINDOW SCHEDULES FOR DETAILS.

10. REFER TO DOOR AND WINDOW SCHEDULES FOR DETAILS.

11. REFER TO DOOR AND WINDOW SCHEDULES FOR DETAILS.

12. REFER TO DOOR AND WINDOW SCHEDULES FOR DETAILS.

13. REFER TO DOOR AND WINDOW SCHEDULES FOR DETAILS.

14. REFER TO DOOR AND WINDOW SCHEDULES FOR DETAILS.

15. REFER TO DOOR AND WINDOW SCHEDULES FOR DETAILS.

16. REFER TO DOOR AND WINDOW SCHEDULES FOR DETAILS.

17. REFER TO DOOR AND WINDOW SCHEDULES FOR DETAILS.

18. REFER TO DOOR AND WINDOW SCHEDULES FOR DETAILS.

19. REFER TO DOOR AND WINDOW SCHEDULES FOR DETAILS.

20. REFER TO DOOR AND WINDOW SCHEDULES FOR DETAILS.

21. REFER TO DOOR AND WINDOW SCHEDULES FOR DETAILS.

22. REFER TO DOOR AND WINDOW SCHEDULES FOR DETAILS.

23. REFER TO DOOR AND WINDOW SCHEDULES FOR DETAILS.

24. REFER TO DOOR AND WINDOW SCHEDULES FOR DETAILS.

25. REFER TO DOOR AND WINDOW SCHEDULES FOR DETAILS.

26. REFER TO DOOR AND WINDOW SCHEDULES FOR DETAILS.

27. REFER TO DOOR AND WINDOW SCHEDULES FOR DETAILS.

28. REFER TO DOOR AND WINDOW SCHEDULES FOR DETAILS.

29. REFER TO DOOR AND WINDOW SCHEDULES FOR DETAILS.

30. REFER TO DOOR AND WINDOW SCHEDULES FOR DETAILS.

31. REFER TO DOOR AND WINDOW SCHEDULES FOR DETAILS.

32. REFER TO DOOR AND WINDOW SCHEDULES FOR DETAILS.

33. REFER TO DOOR AND WINDOW SCHEDULES FOR DETAILS.

34. REFER TO DOOR AND WINDOW SCHEDULES FOR DETAILS.

35. REFER TO DOOR AND WINDOW SCHEDULES FOR DETAILS.

36. REFER TO DOOR AND WINDOW SCHEDULES FOR DETAILS.

37. REFER TO DOOR AND WINDOW SCHEDULES FOR DETAILS.

38. REFER TO DOOR AND WINDOW SCHEDULES FOR DETAILS.

39. REFER TO DOOR AND WINDOW SCHEDULES FOR DETAILS.

40. REFER TO DOOR AND WINDOW SCHEDULES FOR DETAILS.

41. REFER TO DOOR AND WINDOW SCHEDULES FOR DETAILS.

42. REFER TO DOOR AND WINDOW SCHEDULES FOR DETAILS.

43. REFER TO DOOR AND WINDOW SCHEDULES FOR DETAILS.

44. REFER TO DOOR AND WINDOW SCHEDULES FOR DETAILS.

45. REFER TO DOOR AND WINDOW SCHEDULES FOR DETAILS.

46. REFER TO DOOR AND WINDOW SCHEDULES FOR DETAILS.

47. REFER TO DOOR AND WINDOW SCHEDULES FOR DETAILS.

48. REFER TO DOOR AND WINDOW SCHEDULES FOR DETAILS.

49. REFER TO DOOR AND WINDOW SCHEDULES FOR DETAILS.

50. REFER TO DOOR AND WINDOW SCHEDULES FOR DETAILS.

51. REFER TO DOOR AND WINDOW SCHEDULES FOR DETAILS.

52. REFER TO DOOR AND WINDOW SCHEDULES FOR DETAILS.

53. REFER TO DOOR AND WINDOW SCHEDULES FOR DETAILS.

54. REFER TO DOOR AND WINDOW SCHEDULES FOR DETAILS.

55. REFER TO DOOR AND WINDOW SCHEDULES FOR DETAILS.

56. REFER TO DOOR AND WINDOW SCHEDULES FOR DETAILS.

57. REFER TO DOOR AND WINDOW SCHEDULES FOR DETAILS.

58. REFER TO DOOR AND WINDOW SCHEDULES FOR DETAILS.

59. REFER TO DOOR AND WINDOW SCHEDULES FOR DETAILS.

60. REFER TO DOOR AND WINDOW SCHEDULES FOR DETAILS.

61. REFER TO DOOR AND WINDOW SCHEDULES FOR DETAILS.

62. REFER TO DOOR AND WINDOW SCHEDULES FOR DETAILS.

63. REFER TO DOOR AND WINDOW SCHEDULES FOR DETAILS.

64. REFER TO DOOR AND WINDOW SCHEDULES FOR DETAILS.

65. REFER TO DOOR AND WINDOW SCHEDULES FOR DETAILS.

66. REFER TO DOOR AND WINDOW SCHEDULES FOR DETAILS.

67. REFER TO DOOR AND WINDOW SCHEDULES FOR DETAILS.

68. REFER TO DOOR AND WINDOW SCHEDULES FOR DETAILS.

69. REFER TO DOOR AND WINDOW SCHEDULES FOR DETAILS.

70. REFER TO DOOR AND WINDOW SCHEDULES FOR DETAILS.

71. REFER TO DOOR AND WINDOW SCHEDULES FOR DETAILS.

72. REFER TO DOOR AND WINDOW SCHEDULES FOR DETAILS.

73. REFER TO DOOR AND WINDOW SCHEDULES FOR DETAILS.

74. REFER TO DOOR AND WINDOW SCHEDULES FOR DETAILS.

75. REFER TO DOOR AND WINDOW SCHEDULES FOR DETAILS.

76. REFER TO DOOR AND WINDOW SCHEDULES FOR DETAILS.

77. REFER TO DOOR AND WINDOW SCHEDULES FOR DETAILS.

78. REFER TO DOOR AND WINDOW SCHEDULES FOR DETAILS.

79. REFER TO DOOR AND WINDOW SCHEDULES FOR DETAILS.

80. REFER TO DOOR AND WINDOW SCHEDULES FOR DETAILS.

81. REFER TO DOOR AND WINDOW SCHEDULES FOR DETAILS.

82. REFER TO DOOR AND WINDOW SCHEDULES FOR DETAILS.

83. REFER TO DOOR AND WINDOW SCHEDULES FOR DETAILS.

84. REFER TO DOOR AND WINDOW SCHEDULES FOR DETAILS.

85. REFER TO DOOR AND WINDOW SCHEDULES FOR DETAILS.

86. REFER TO DOOR AND WINDOW SCHEDULES FOR DETAILS.

87. REFER TO DOOR AND WINDOW SCHEDULES FOR DETAILS.

88. REFER TO DOOR AND WINDOW SCHEDULES FOR DETAILS.

89. REFER TO DOOR AND WINDOW SCHEDULES FOR DETAILS.

90. REFER TO DOOR AND WINDOW SCHEDULES FOR DETAILS.

91. REFER TO DOOR AND WINDOW SCHEDULES FOR DETAILS.

92. REFER TO DOOR AND WINDOW SCHEDULES FOR DETAILS.

93. REFER TO DOOR AND WINDOW SCHEDULES FOR DETAILS.

94. REFER TO DOOR AND WINDOW SCHEDULES FOR DETAILS.

95. REFER TO DOOR AND WINDOW SCHEDULES FOR DETAILS.

96. REFER TO DOOR AND WINDOW SCHEDULES FOR DETAILS.

97. REFER TO DOOR AND WINDOW SCHEDULES FOR DETAILS.

98. REFER TO DOOR AND WINDOW SCHEDULES FOR DETAILS.

99. REFER TO DOOR AND WINDOW SCHEDULES FOR DETAILS.

100. REFER TO DOOR AND WINDOW SCHEDULES FOR DETAILS.

**KEY PLAN:**

**WALL TYPE REFER A500**

**DOOR TYPE**

**BUILDING**

**WALL FINISH & COLOUR**

**DOOR COLOUR/FRAME COLOUR**

**FLOOR FINISH & COLOUR**

**SKYRTING FINISH AND COLOUR**

**VOIS VERIFY ON SITE**

**FRL**

--- FIRE WALLS/FIRE SEPARATING WALLS 120/120/120

--- STAIRLIFT SHAFTS 120/120/120

--- SHOOTING PRODUCTS 120/120/120

--- OTHER SHAFTS 120/120/120

--- FIRE WALLS/FIRE SEPARATING WALLS 90/90/90

--- FIRE WALLS 90/90/90

--- STAIRLIFT SHAFTS 90/90/90

--- OTHER SHAFTS 90/90/90

--- GARAGE ROOMS 90/90/90

--- BOUNDARY CORRIDORS 90/90/90

--- BETWEEN SOU 90/90/90

--- SMOKE WALLS 90/90/90

NS LB - LOAD BEARING

NLB - NON LOAD BEARING

No.	Rev.	Description	Date
1	1	ISSUED FOR PERMIT	22/04/13
2	1	ISSUED FOR PERMIT	22/04/13
3	1	ISSUED FOR PERMIT	22/04/13
4	1	ISSUED FOR PERMIT	22/04/13
5	1	ISSUED FOR PERMIT	22/04/13
6	1	ISSUED FOR PERMIT	22/04/13
7	1	ISSUED FOR PERMIT	22/04/13
8	1	ISSUED FOR PERMIT	22/04/13
9	1	ISSUED FOR PERMIT	22/04/13
10	1	ISSUED FOR PERMIT	22/04/13
11	1	ISSUED FOR PERMIT	22/04/13
12	1	ISSUED FOR PERMIT	22/04/13
13	1	ISSUED FOR PERMIT	22/04/13
14	1	ISSUED FOR PERMIT	22/04/13
15	1	ISSUED FOR PERMIT	22/04/13
16	1	ISSUED FOR PERMIT	22/04/13
17	1	ISSUED FOR PERMIT	22/04/13
18	1	ISSUED FOR PERMIT	22/04/13
19	1	ISSUED FOR PERMIT	22/04/13
20	1	ISSUED FOR PERMIT	22/04/13
21	1	ISSUED FOR PERMIT	22/04/13
22	1	ISSUED FOR PERMIT	22/04/13
23	1	ISSUED FOR PERMIT	22/04/13
24	1	ISSUED FOR PERMIT	22/04/13
25	1	ISSUED FOR PERMIT	22/04/13
26	1	ISSUED FOR PERMIT	22/04/13
27	1	ISSUED FOR PERMIT	22/04/13
28	1	ISSUED FOR PERMIT	22/04/13
29	1	ISSUED FOR PERMIT	22/04/13
30	1	ISSUED FOR PERMIT	22/04/13
31	1	ISSUED FOR PERMIT	22/04/13
32	1	ISSUED FOR PERMIT	22/04/13
33	1	ISSUED FOR PERMIT	22/04/13
34	1	ISSUED FOR PERMIT	22/04/13
35	1	ISSUED FOR PERMIT	22/04/13
36	1	ISSUED FOR PERMIT	22/04/13
37	1	ISSUED FOR PERMIT	22/04/13
38	1	ISSUED FOR PERMIT	22/04/13
39	1	ISSUED FOR PERMIT	22/04/13
40	1	ISSUED FOR PERMIT	22/04/13
41	1	ISSUED FOR PERMIT	22/04/13
42	1	ISSUED FOR PERMIT	22/04/13
43	1	ISSUED FOR PERMIT	22/04/13
44	1	ISSUED FOR PERMIT	22/04/13
45	1	ISSUED FOR PERMIT	22/04/13
46	1	ISSUED FOR PERMIT	22/04/13
47	1	ISSUED FOR PERMIT	22/04/13
48	1	ISSUED FOR PERMIT	22/04/13
49	1	ISSUED FOR PERMIT	22/04/13
50	1	ISSUED FOR PERMIT	22/04/13
51	1	ISSUED FOR PERMIT	22/04/13
52	1	ISSUED FOR PERMIT	22/04/13
53	1	ISSUED FOR PERMIT	22/04/13
54	1	ISSUED FOR PERMIT	22/04/13
55	1	ISSUED FOR PERMIT	22/04/13
56	1	ISSUED FOR PERMIT	22/04/13
57	1	ISSUED FOR PERMIT	22/04/13
58	1	ISSUED FOR PERMIT	22/04/13
59	1	ISSUED FOR PERMIT	22/04/13
60	1	ISSUED FOR PERMIT	22/04/13
61	1	ISSUED FOR PERMIT	22/04/13
62	1	ISSUED FOR PERMIT	22/04/13
63	1	ISSUED FOR PERMIT	22/04/13
64	1	ISSUED FOR PERMIT	22/04/13
65	1	ISSUED FOR PERMIT	22/04/13
66	1	ISSUED FOR PERMIT	22/04/13
67	1	ISSUED FOR PERMIT	22/04/13
68	1	ISSUED FOR PERMIT	22/04/13
69	1	ISSUED FOR PERMIT	22/04/13
70	1	ISSUED FOR PERMIT	22/04/13
71	1	ISSUED FOR PERMIT	22/04/13
72	1	ISSUED FOR PERMIT	22/04/13
73	1	ISSUED FOR PERMIT	22/04/13
74	1	ISSUED FOR PERMIT	22/04/13
75	1	ISSUED FOR PERMIT	22/04/13
76	1	ISSUED FOR PERMIT	22/04/13
77	1	ISSUED FOR PERMIT	22/04/13
78	1	ISSUED FOR PERMIT	22/04/13
79	1	ISSUED FOR PERMIT	22/04/13
80	1	ISSUED FOR PERMIT	22/04/13
81	1	ISSUED FOR PERMIT	22/04/13
82	1	ISSUED FOR PERMIT	22/04/13
83	1	ISSUED FOR PERMIT	22/04/13
84	1	ISSUED FOR PERMIT	22/04/13
85	1	ISSUED FOR PERMIT	22/04/13
86	1	ISSUED FOR PERMIT	22/04/13
87	1	ISSUED FOR PERMIT	22/04/13
88	1	ISSUED FOR PERMIT	22/04/13
89	1	ISSUED FOR PERMIT	22/04/13
90	1	ISSUED FOR PERMIT	22/04/13
91	1	ISSUED FOR PERMIT	22/04/13
92	1	ISSUED FOR PERMIT	22/04/13
93	1	ISSUED FOR PERMIT	22/04/13
94	1	ISSUED FOR PERMIT	22/04/13
95	1	ISSUED FOR PERMIT	22/04/13
96	1	ISSUED FOR PERMIT	22/04/13
97	1	ISSUED FOR PERMIT	22/04/13
98	1	ISSUED FOR PERMIT	22/04/13
99	1	ISSUED FOR PERMIT	22/04/13
100	1	ISSUED FOR PERMIT	22/04/13

Rev.	Description	Date
1	ISSUED FOR PERMIT	22/04/13
2	ISSUED FOR PERMIT	22/04/13
3	ISSUED FOR PERMIT	22/04/13
4	ISSUED FOR PERMIT	22/04/13
5	ISSUED FOR PERMIT	22/04/13
6	ISSUED FOR PERMIT	22/04/13
7	ISSUED FOR PERMIT	22/04/13
8	ISSUED FOR PERMIT	22/04/13
9	ISSUED FOR PERMIT	22/04/13
10	ISSUED FOR PERMIT	22/04/13
11	ISSUED FOR PERMIT	22/04/13
12	ISSUED FOR PERMIT	22/04/13
13	ISSUED FOR PERMIT	22/04/13
14	ISSUED FOR PERMIT	22/04/13
15	ISSUED FOR PERMIT	22/04/13
16	ISSUED FOR PERMIT	22/04/13
17	ISSUED FOR PERMIT	22/04/13
18	ISSUED FOR PERMIT	22/04/13
19	ISSUED FOR PERMIT	22/04/13
20	ISSUED FOR PERMIT	22/04/13
21	ISSUED FOR PERMIT	22/04/13
22	ISSUED FOR PERMIT	22/04/13
23	ISSUED FOR PERMIT	22/04/13
24	ISSUED FOR PERMIT	22/04/13
25	ISSUED FOR PERMIT	22/04/13
26	ISSUED FOR PERMIT	22/04/13
27	ISSUED FOR PERMIT	22/04/13
28	ISSUED FOR PERMIT	22/04/13
29	ISSUED FOR PERMIT	22/04/13
30	ISSUED FOR PERMIT	22/04/13
31	ISSUED FOR PERMIT	22/04/13
32	ISSUED FOR PERMIT	22/04/13
33	ISSUED FOR PERMIT	22/04/13
34	ISSUED FOR PERMIT	22/04/13
35	ISSUED FOR PERMIT	22/04/13
36	ISSUED FOR PERMIT	22/04/13
37	ISSUED FOR PERMIT	22/04/13
38	ISSUED FOR PERMIT	22/04/13
39	ISSUED FOR PERMIT	22/04/13
40	ISSUED FOR PERMIT	22/04/13
41	ISSUED FOR PERMIT	22/04/13
42	ISSUED FOR PERMIT	22/04/13
43	ISSUED FOR PERMIT	22/04/13
44	ISSUED FOR PERMIT	22/04/13
45	ISSUED FOR PERMIT	22/04/13
46	ISSUED FOR PERMIT	22/04/13
47	ISSUED FOR PERMIT	22/04/13
48	ISSUED FOR PERMIT	22/04/13
49	ISSUED FOR PERMIT	22/04/13
50	ISSUED FOR PERMIT	22/04/13
51	ISSUED FOR PERMIT	22/04/13
52	ISSUED FOR PERMIT	22/04/13
53	ISSUED FOR PERMIT	22/04/13
54	ISSUED FOR PERMIT	22/04/13
55	ISSUED FOR PERMIT	22/04/13
56	ISSUED FOR PERMIT	22/04/13
57	ISSUED FOR PERMIT	22/04/13
58	ISSUED FOR PERMIT	22/04/13
59	ISSUED FOR PERMIT	22/04/13
60	ISSUED FOR PERMIT	22/04/13
61	ISSUED FOR PERMIT	22/04/13
62	ISSUED FOR PERMIT	22/04/13
63	ISSUED FOR PERMIT	22/04/13
64	ISSUED FOR PERMIT	22/04/13
65	ISSUED FOR PERMIT	22/04/13
66	ISSUED FOR PERMIT	22/04/13
67	ISSUED FOR PERMIT	22/04/13
68	ISSUED FOR PERMIT	22/04/13
69	ISSUED FOR PERMIT	22/04/13
70	ISSUED FOR PERMIT	22/04/13
71	ISSUED FOR PERMIT	22/04/13
72	ISSUED FOR PERMIT	22/04/13
73	ISSUED FOR PERMIT	22/04/13
74	ISSUED FOR PERMIT	22/04/13
75	ISSUED FOR PERMIT	22/04/13
76	ISSUED FOR PERMIT	22/04/13
77	ISSUED FOR PERMIT	22/04/13
78	ISSUED FOR PERMIT	22/04/13
79	ISSUED FOR PERMIT	22/04/13
80	ISSUED FOR PERMIT	22/04/13
81	ISSUED FOR PERMIT	22/04/13
82	ISSUED FOR PERMIT	22/04/13
83	ISSUED FOR PERMIT	22/04/13
84	ISSUED FOR PERMIT	22/04/13
85	ISSUED FOR PERMIT	22/04/13
86	ISSUED FOR PERMIT	22/04/13
87	ISSUED FOR PERMIT	22/04/13
88	ISSUED FOR PERMIT	22/04/13
89	ISSUED FOR PERMIT	22/04/13
90	ISSUED FOR PERMIT	22/04/13
91	ISSUED FOR PERMIT	22/04/13
92	ISSUED FOR PERMIT	22/04/13
93	ISSUED FOR PERMIT	22/04/13
94	ISSUED FOR PERMIT	22/04/13
95	ISSUED FOR PERMIT	22/04/13
96	ISSUED FOR PERMIT	22/04/13
97	ISSUED FOR PERMIT	22/04/13
98	ISSUED FOR PERMIT	22/04/13
99	ISSUED FOR PERMIT	22/04/13
100	ISSUED FOR PERMIT	22/04/13

**Consultants**

Account Consultant	Account Logic Consultancy Pty Limited	+61 2 83383888
Accessibility Consultant	North Godley Accessibility Consulting	+61 2 98292522
BCA Consultant	City Plan Services	+61 2 82703596
Civil / Structural Engineer	BGA&E	+61 8 97703300
Electrical, Hydraulic, ESD & Mechanical Engineer		
Fire Engineer	Green Fire&Risk	+61 1300736290
Interior Designer	PTW Architects	+61 2 92225377
Interior Architect	Lin Jackson Architect	+61 2 95723986
Project Manager	Momentum PM	+61 4 10518974
Planning	S&B Planning	+61 2 90024200
Traffic Consultant	Transport and Traffic Planning Associates	+61 2 34500788