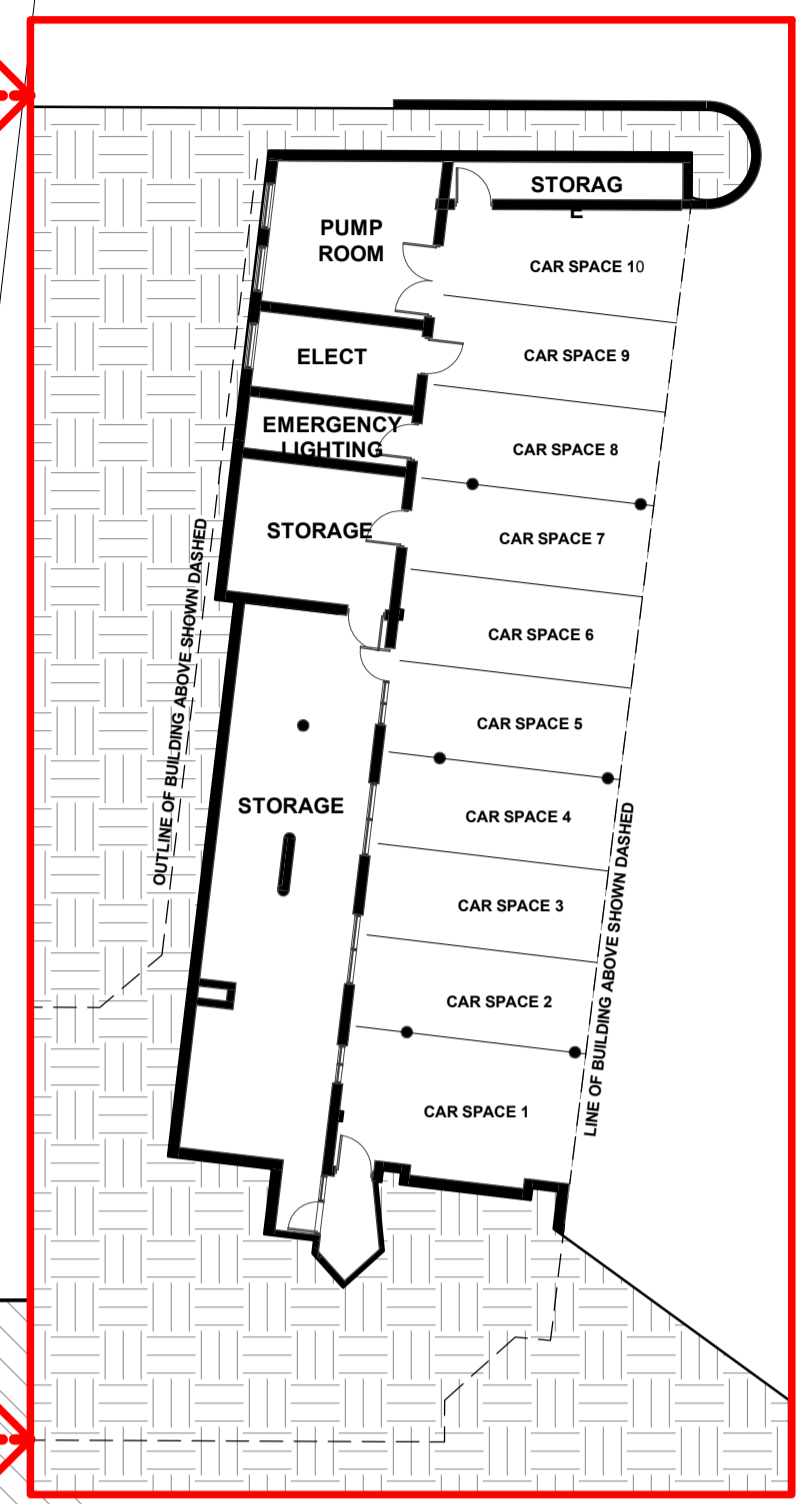
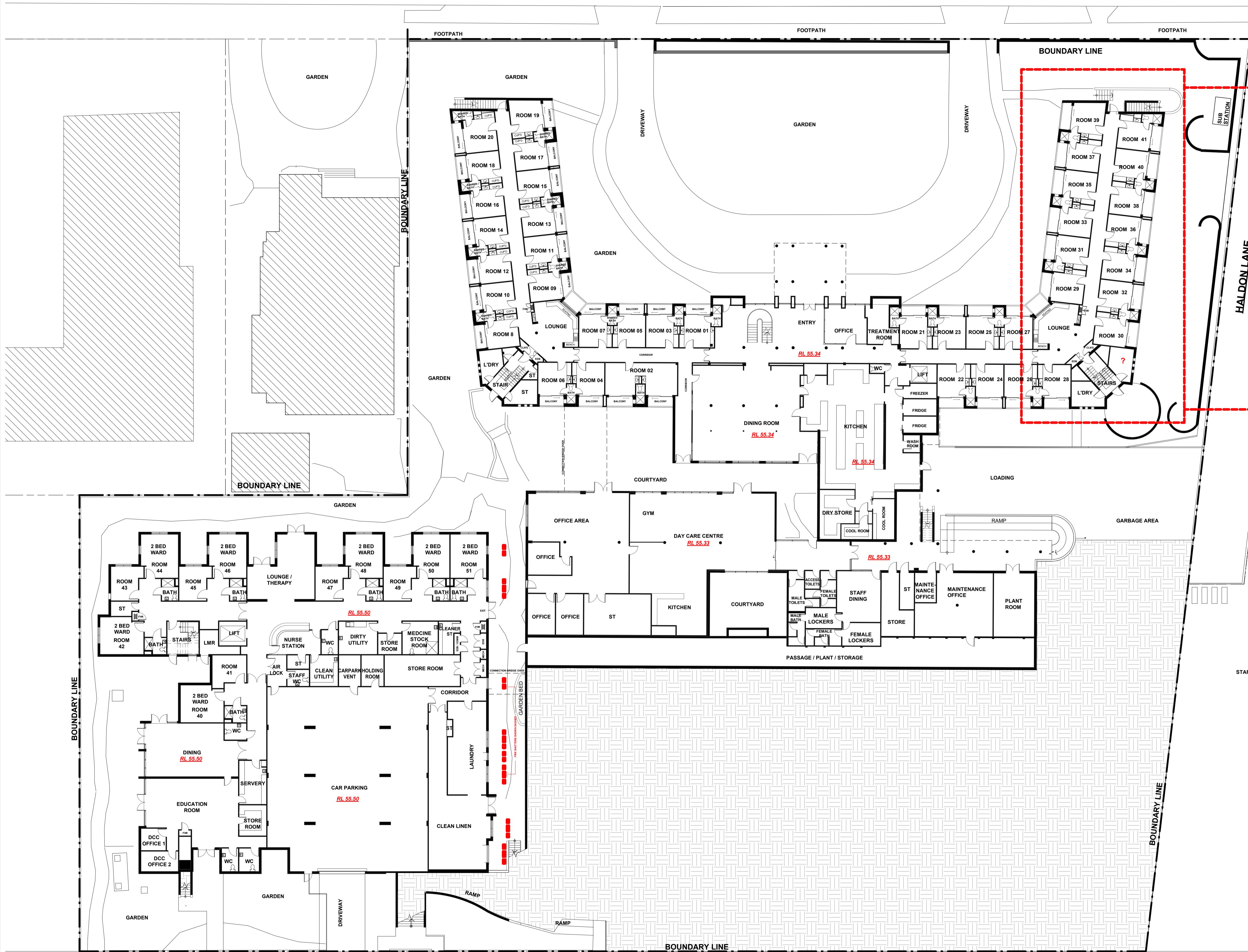
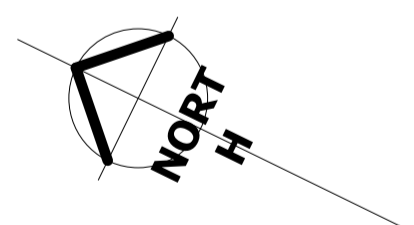


HALDON STREET



LOWER GROUND FLOOR
(BENEATH SOUTH WING - LOURANTOS VILLAGE)
1:200



NOMINATED ARCHITECT:
designdelta Architects
 1903/100 William Street
 Sydney NSW 2011
 e: admin@designdelta.com.au
 w: designdelta.com.au t: 02 8076 5300

AS - BUILT
ST BASIL'S HOMES
 130 CROYDON STREET, LAKEMBA

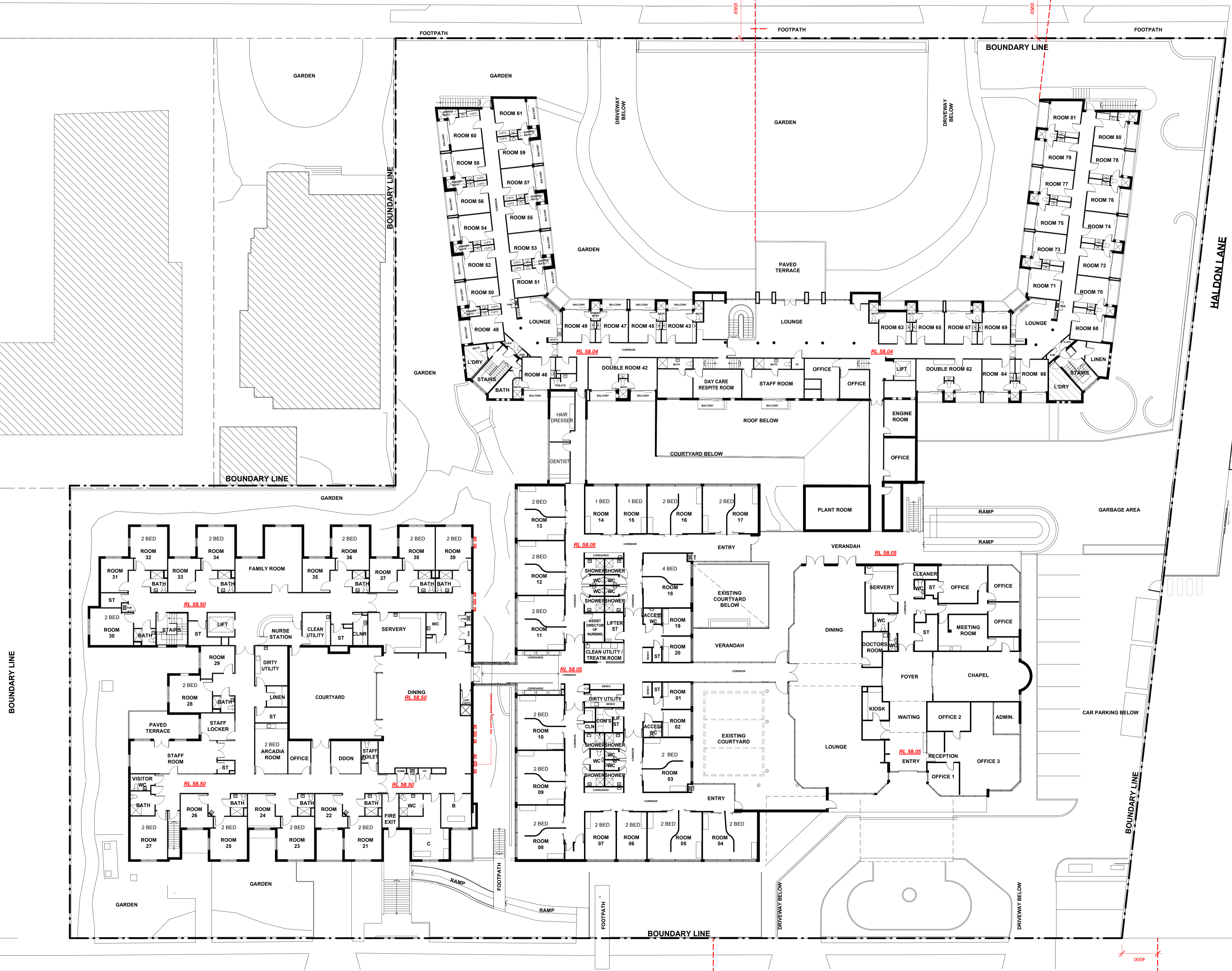
Sheet Title:
**LOWER GROUND FLOOR
 AND GROUND FLOOR**

Scale: 1 : 200	Date Issued: 15/05/2020
Drawn By: SX	Checked By: DS
Verified By: DS	Sheet #: A101
Job No: 1410	Rev: A

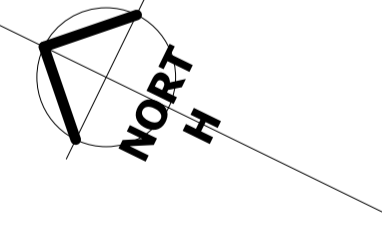
DRAFT FOR REVIEW 0 2 4 6 8 10 m

CROYDON STREET

HALDON STREET



STAFF PARKING



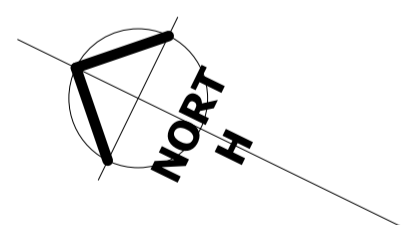
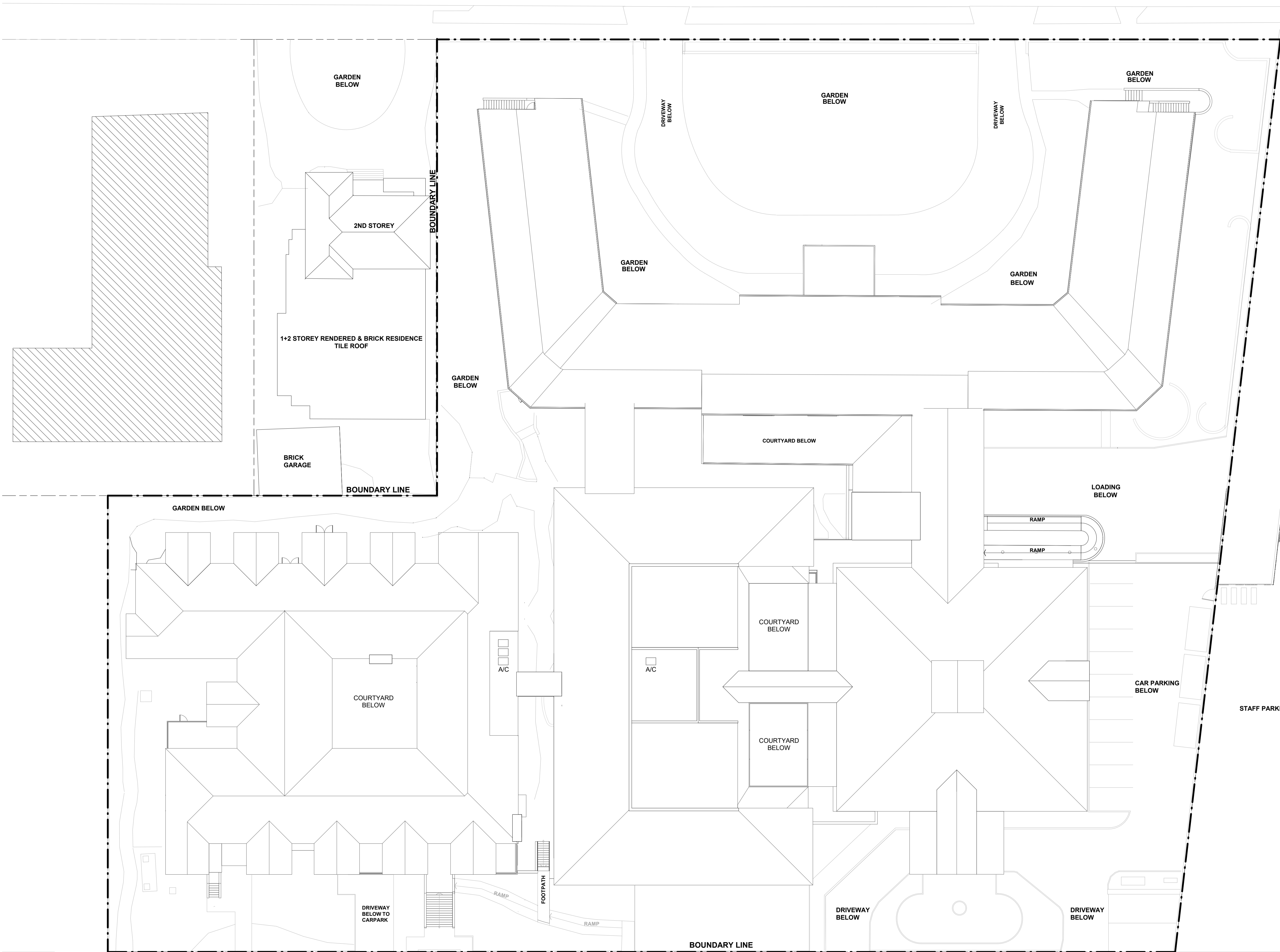
NOMINATED ARCHITECT:
designdelta Architects
 1903/100 William Street
 Sydney NSW 2011
 e: admin@designdelta.com.au
 w: designdelta.com.au t: 02 8076 5300

AS - BUILT
ST BASIL'S HOMES
 130 CROYDON STREET, LAKEMBA

Sheet Title:
FIRST FLOOR

Scale: 1 : 200	gA1	Date Issued: 15/05/2020	
Drawn By: SX	Checked By: DS	Verified By: DS	Sheet #: A102
Job No: 1410			Rev: A

DRAFT FOR REVIEW 0 2 4 6 8 10 m



NOMINATED ARCHITECT:
designdelta Architects
 1903/100 William Street
 Sydney NSW 2011
 e: admin@designdelta.com.au
 w: designdelta.com.au t 02 8076 5300

AS - BUILT
ST BASIL'S HOMES
 130 CROYDON STREET, LAKEMBA

Sheet Title:
ROOF PLAN

Scale: 1 : 200	Date Issued: 15/05/2020
Drawn By: DS	Checked By: DS
Verified By: DS	Sheet #: A108
Job No: 1410	Rev: A